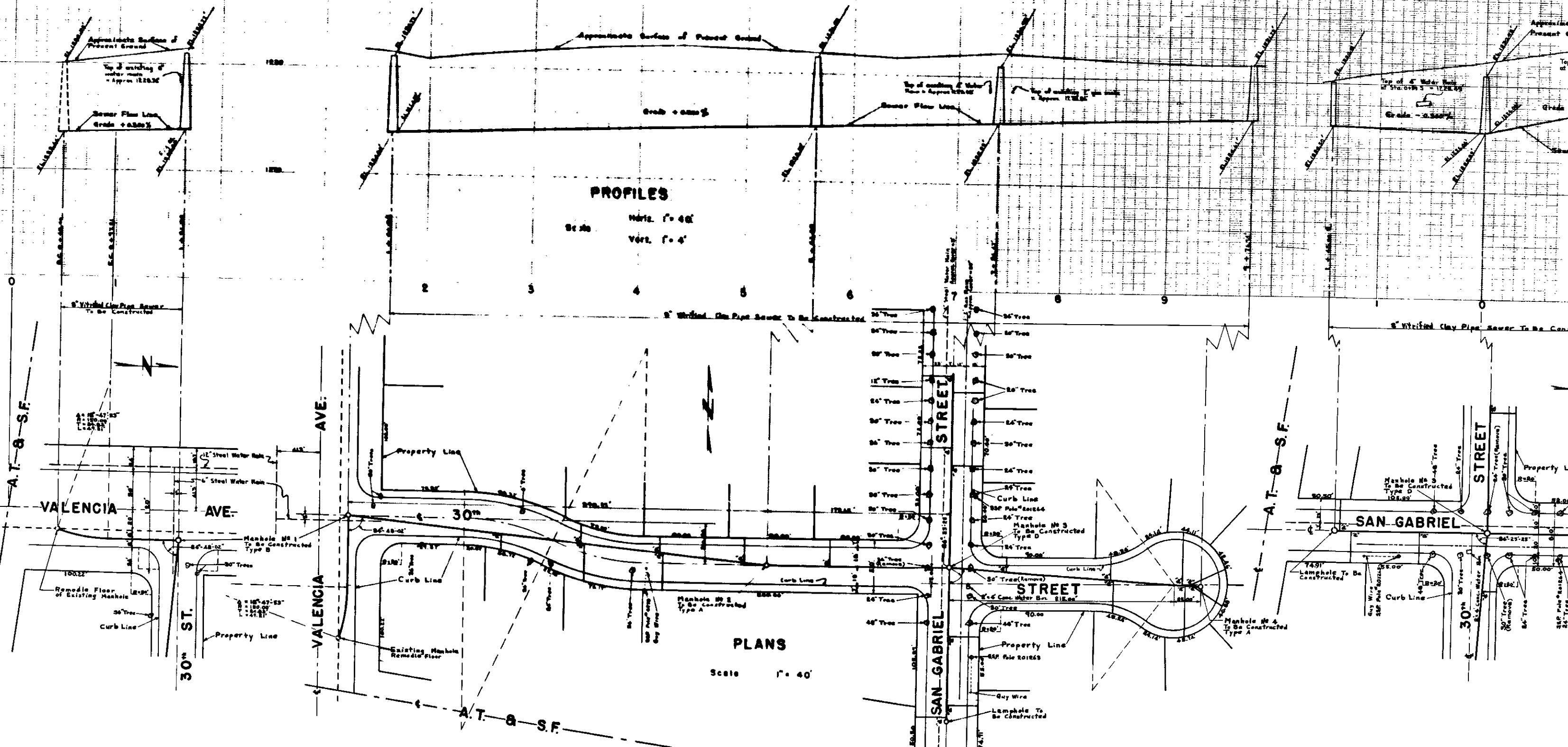


NOTE
 All Connecting Sewer Shall be Four inch Vitrified Pipe
 and Shall be Constructed on an Upward Grade of
 Two Per Cent from the Main Sewer to the Property Line.
 All Work Indicated in these Plans Shall be Done in Conformity with
 Applicable Provisions of Specifications No 2081.
 City S.M. on North End of West Curb of Valencia South of
 A.T. & S.F. Railroad EL 1226.00
 All Stations are on Center Line of Sewer.



PROFILES

Scale
 Horiz. 1" = 40'
 Vert. 1" = 4'

PLANS

Scale 1" = 40'